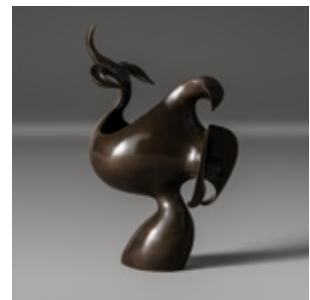
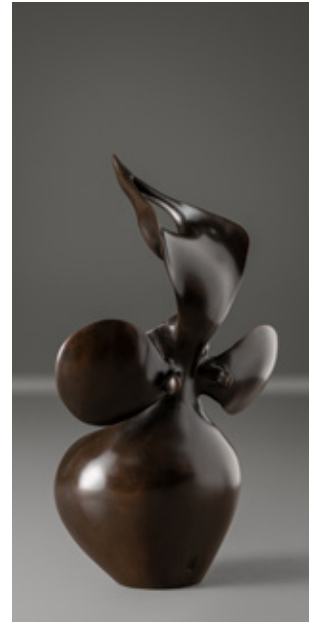




ALEXANDER
LAMONT



1. **Aphyllum** Vase / 2. **Encyclia** Vase / 3. **Maxillia** Vase

Sculptural forms cast from the architecture of tropical orchids. Tendrils branch upwards and thick labellums fan outwards to create balanced and sensual lines.

| | | | | |
|-------------|-------------|----------|----------|-----------|
| 1. FG000167 | Inches | W 4 ½ in | L 6 in | H 8 ¾ in |
| | Centimetres | W 11 cm | L 15 cm | H 22 cm |
| 2. FG000168 | Inches | W 7 ½ in | L 9 in | H 10 ¾ in |
| | Centimetres | W 19 cm | L 23 cm | H 27 cm |
| 3. FG000166 | Inches | W 5 ½ in | L 8 ¼ in | H 13 ¾ in |
| | Centimetres | W 14 cm | L 21 cm | H 35 cm |

Material : Bronze

